

Write the number of problems you completed at the top of your paper and start Solve using equivalent ratios. (Example 1) correcting (7)

3. Leila and Jo are two of the partners in a business. Leila makes \$3 in profits for every \$4 that Jo makes. If Jo makes \$60 profit on the first item they sell, how much profit does Leila make? \$45

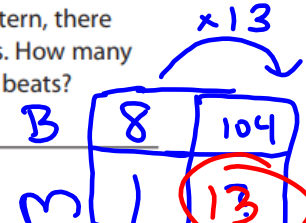
4. Hendrick wants to enlarge a photo that is 4 inches wide and 6 inches tall. The enlarged photo keeps the same ratio. How tall is the enlarged photo if it is 12 inches wide? 18 inches tall

Solve using unit rates. (Example 2)

5. A person on a moving sidewalk travels 21 feet in 7 seconds. The moving sidewalk has a length of 180 feet. How long will it take to move from one end of the sidewalk to the other?  
60 seconds

6. In a repeating musical pattern, there are 56 beats in 7 measures. How many measures are there in 104 beats?

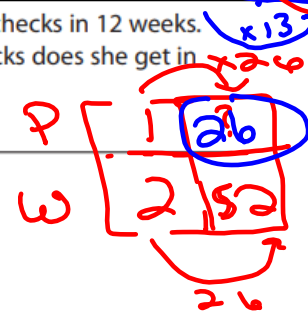
13 measures  
 $\frac{56}{7} = \frac{8}{1}$



7. Contestants in a dance-a-thon rest for the same amount of time every hour. A couple rests for 25 minutes in 5 hours. How long did they rest in 8 hours?  
40 minutes

8. Frances gets 6 paychecks in 12 weeks. How many paychecks does she get in 52 weeks?

26 paychecks



13 is on the next slide

Oct 30-3:16 PM

13. On an airplane, there are two seats on the left side in each row and three seats on the right side. There are 90 seats on the right side of the plane.

a. How many seats are on the left side of the plane? 60 seats

b. How many seats are there altogether? 150 seats

Oct 30-3:21 PM



## Using Proportional Relationships to Find Distance on a Map

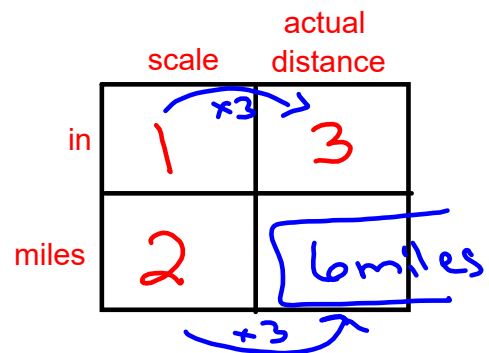
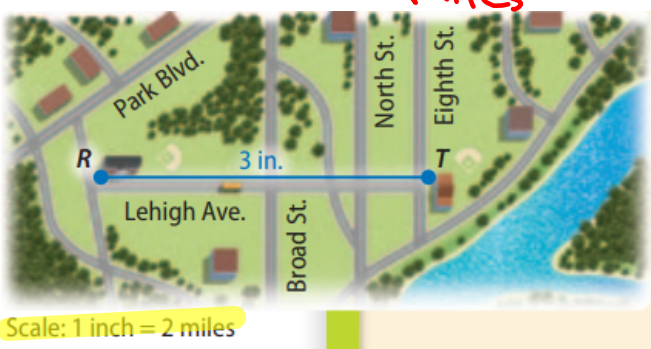
Oct 30-3:22 PM

pg.181

A **scale drawing** is a drawing of a real object that is proportionally smaller or larger than the real object. A **scale** describes how the dimensions in the objects compare.

A map is a scale drawing. The measurements on a map are in proportion to the actual distances. If 1 inch on a map equals an actual distance of 2 miles, the **scale is 1 inch = 2 miles**. You can write a scale as a rate to solve problems.

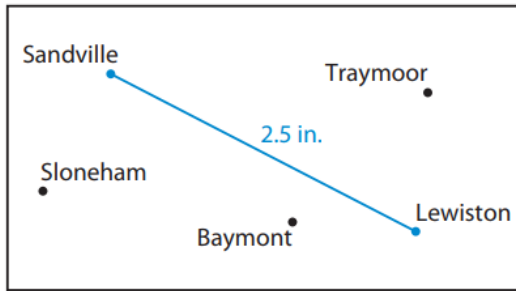
The distance between two schools on Lehigh Avenue is shown on the map. What is the actual distance between the schools?



Oct 30-3:23 PM

**YOUR TURN**

3. The distance between Sandville and Lewiston is shown on the map. What is the actual distance between the towns?



Scale: 1 inch = 20 miles

	scale	actual distance
in	1	2.5
miles	20	50 mi

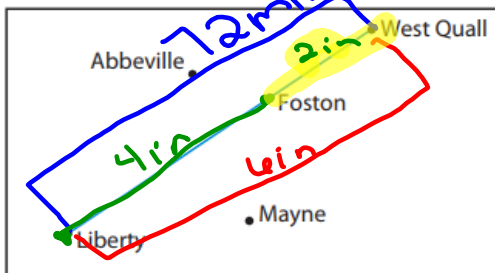
*Handwritten notes: Blue arrows show 'x 2.5' from 1 to 2.5 and from 20 to 50. A box is drawn around '50 mi'.*

$$\begin{array}{r} 2.5 \\ \times 20 \\ \hline 50.0 \end{array}$$

Oct 30-3:27 PM

11. The scale of the map is missing. The actual distance from Liberty to West Quall is 72 miles, and it is 6 inches on the map.

pg. 183



	scale	actual distance
in	1	6 ÷ 6
mi	12	72 ÷ 6

- a. What is the scale of the map?

1 inch = 12 miles

- b. Foston is between Liberty and West Quall and is 4 inches from Liberty on the map. How far is Foston from West Quall?

24 miles

	scale	A.D.
in	1	2
mi	12	? 24 miles

*Handwritten notes: Red arrows show 'x 2' from 1 to 2 and from 12 to 24. Labels 'S.C.' and 'A.D.' are written above the table.*

Oct 30-3:48 PM

Homework - Worksheet  
Can be completed directly on the worksheet

Quiz Friday over 7.1 - 7.2



Read or work on other hw when completed

Site Code: 1201590

Oct 30-3:28 PM